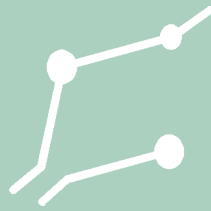


# bottle SWITCH

BTL150/25BBS



## ABS approved instrument

Certificate No 00-NO30314-X

Bronze Bottle Switch  
for point level detection in  
liquid storage tanks

## benefits

**316SST Float with  
Manual Lift to test Mechanism**

**Simple installation with  
External Mounting Tab**

**Corrosion resistant  
Bronze body  
& Brass stem**

Bottle switch model BTL150/25BBS is designed to be installed externally to ships and industrial tanks to provide a high or low level alarm signal.

It may also be bolted to adjoining structures. This switch is primarily of bronze construction with a stainless float and a hermetically sealed SPDT reed switch. This ABS approved switch is also designed with a special feature, a manual lift to test mechanism for use in the field to determine if a switch is operational.

## standard specifications

MAX TEMP	250°F
MAX PSIG	100
FLOAT SG	0.62
CONTACT RATING	
Resistive Load	25W
Inductive Load	12.5W



Specifications regarding this model may change without notice.

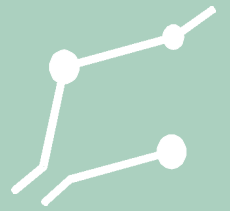
### NOTE:

The actuation point will vary to some extent depending on the temperature and the specific gravity of the individual liquid being detected.

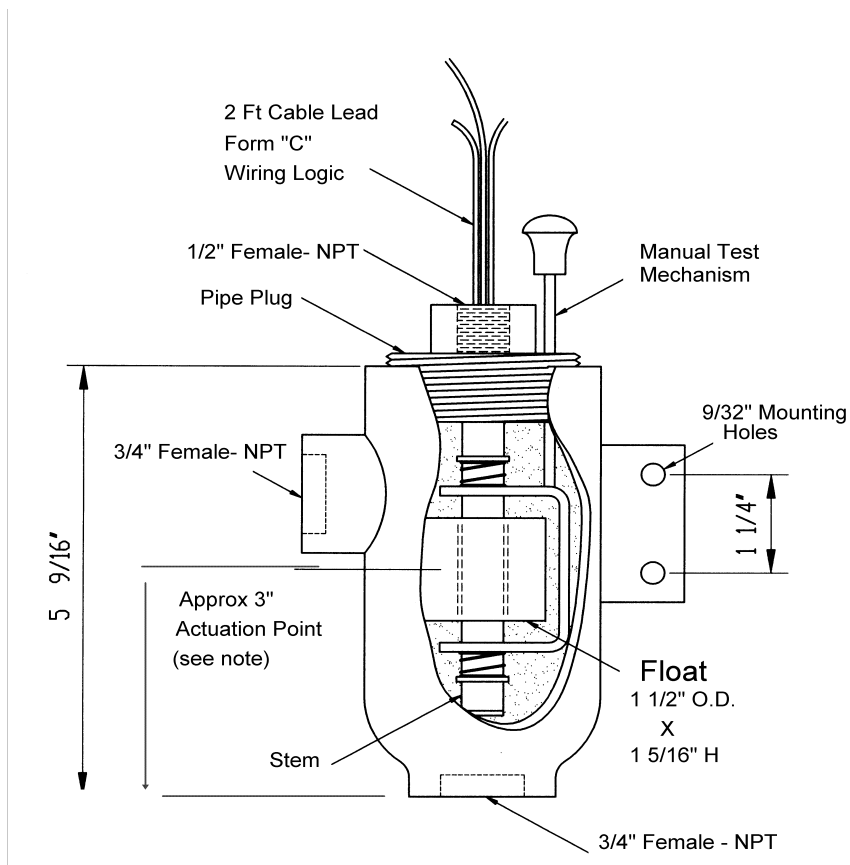
# PSM

# bottle SWITCH

BTL150/25BBS



## Outline dimensions



# PSM

## advice & enquiries

Telephone: +44 (0) 1444 410040

Fax: +44 (0) 1444 410121

Email: [sales@psm-sensors.co.uk](mailto:sales@psm-sensors.co.uk)

Web: <http://www.psm-sensors.co.uk>

The BTL is a registered design. All rights reserved 2003

**PSM Instrumentation Limited**

**Burrell Road Haywards Heath W Sussex RH16 1TW UK**

T +44 (0) 1444 410040 F +44 (0) 1444 410121 W [www.psm-sensors.co.uk](http://www.psm-sensors.co.uk) E [sales@psm-sensors.co.uk](mailto:sales@psm-sensors.co.uk)